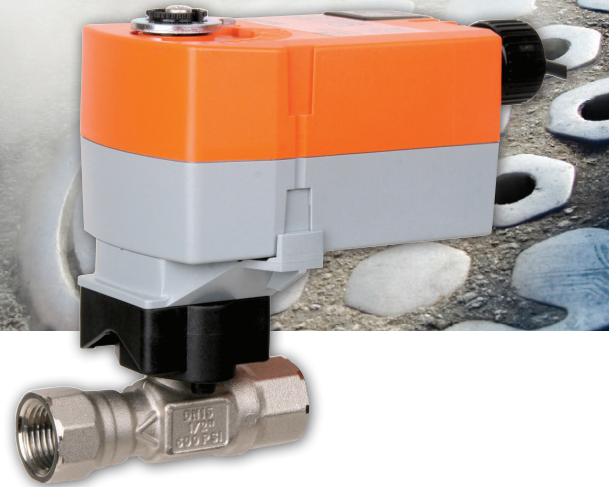


Don't Overlook the Obvious – Control Your Steam.

> We set standards.
www.belimo.com



HTCCV - Environmentally friendly and suitable for hot water and steam applications.

The High Temperature Characterized Control Valve (HTCCV) meets the challenges of space restricted applications such as unit ventilators, and fan coil units. It is available with spring and non-spring return actuators. The HTCCV is environmentally friendly and is suitable for hot water or steam.

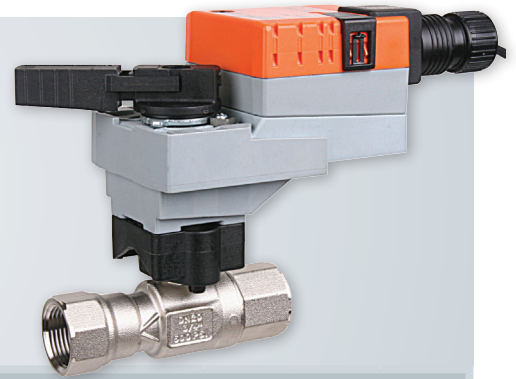
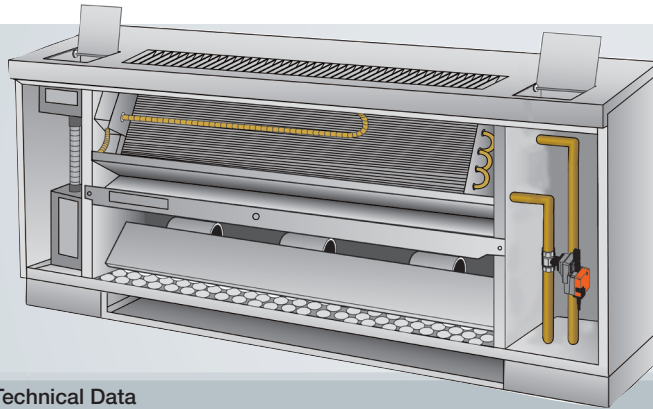
Well thought-out in every respect.

The HTCCV controls water and low pressure steam. Within the ½" to 1" sizes, a globe valve is no match for the HTCCV. The HTCCV features:

- Fluid dynamically designed characterizing disc reduces turbulent flow and improves the efficiency of the system
- It's maintenance free.
- Dezincified brass body, to ensure the mechanical strength and integrity of the valve in a critical steam application.

BELIMO[®]

HTCCV meets the challenges of space restricted applications.



Product Range / Technical Data

Valve Body		Valve Nominal Size			Type	Suitable Actuators	
Service:	hot water (up to 60% glycol) or steam	C _v	Inches	DN [mm]	2-Way NPT	Non-Spring Return	Spring Return
Material:	- body: brass (DZR) P-CuZn35Pb2	0.29	1/2	15	B215HT029	TR Series	TF Series
	- ball: stainless steel	0.46	1/2	15	B215HT046		
	- seat: PTFE Teflon	0.73	1/2	15	B215HT073		
	- characterizing disc: PTFE Teflon	1.16	1/2	15	B215HT116		
	- packing: EPDM O-rings	1.86	1/2	15	B215HT186		
Flow characteristic:	A-port equal percentage	2.9	1/2	15	B215HT290	LR Series	LF Series
Media temp range:	steam: 250° hot water: 37 to 266°F	4.55	1/2	15	B215HT455*		
Close-off pressure:	200 psi	1.86	3/4	20	B220HT186		
Maximum differential pressure (ΔP)	water: 116 psi full open ball	2.9	3/4	20	B220HT290		
	water: 60 psi partially open ball steam: 15 psi	4.46	3/4	20	B220HT464		
Leakage	bubble tight 0%	7.31	3/4	20	B220HT731		
		9.28	3/4	20	B220HT928		
		13.2	3/4	20	B220HT1320		
		4.64	1	25	B225HT464		
		7.31	1	25	B225HT731		
		11.6	1	25	B225HT1160		
		18.56	1	25	B225HT1856		
		28	1	25	B225HT2800		

*Modified equal percentage



Belimo worldwide: www.belimo.com

BELIMO Americas

USA Locations, 43 Old Ridgebury Road, Danbury, CT 06810
Tel. 800-543-9038, Fax 800-228-8283, marketing@us.belimo.com

1049 Fortunato Loop, Sparks, NV 89436
Tel. 800-987-9042, Fax 800-987-8875, marketing@us.belimo.com

Canada Locations, 5845 Kennedy Road, Mississauga, Ontario L4Z 2G3
Tel. 866-805-7089, Fax 905-712-3124, marketing@us.belimo.com

Latin America and the Caribbean Customer Service
Tel. 203-791-8396, Fax 203-791-9139, marketing@us.belimo.com

Belimo Brasil Comércio de Automação Ltda.
Tel: 55 11 3643-5656, Fax: 55 11 3643 5657, atendimentoaocliente@br.belimo.com.

