

PolyStar® Series

POLYCARBONATE ENCLOSURES

**The most innovative, durable and reliable
polycarbonate enclosures available!**



stahlin.com

 **STAHLIN**



Stahlin[®] PolyStar[®] Enclosures

are ideally suited for:



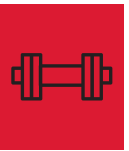
RUGGED APPLICATIONS REQUIRING ENCLOSURE STRENGTH

Over 40% stronger than the competition*, Stahlin's thick, robust side walls eliminate flexing. Heavy-duty and durable, they are produced from a polycarbonate material formulation which provides high-impact resistance and dimensional stability. Our enclosures are popular and reliable in industrial and manufacturing applications within continuously demanding environments.

*Results of independent testing conducted with off-the-shelf competitive polycarbonate enclosures

APPLICATIONS WITH LIKELY NEED FOR IMPACT RESISTANCE

Metal enclosures are vulnerable to denting upon impact, which, along with aesthetic concerns, can compromise the integrity of the seal that protects everything housed within the enclosure. Although Stahlin polycarbonate has a lighter weight than other materials, it boasts a higher impact resistance.



APPLICATIONS REQUIRING CORROSION RESISTANCE

Stahlin polycarbonate enclosures are available with full non-metallic or stainless steel cover latches and full non-metallic hinges that don't penetrate the enclosure and meet NEMA Type 4X requirements, which specifies an increased level of protection from corrosion. Because of this, we meet the demands of diverse industries from oil and gas to carwashes to marine environments.

APPLICATIONS WHERE INSTALLATION AND LABOR ARE CHALLENGES

Polycarbonate, compared with metal enclosures, is lightweight, making it easier and quicker to install; thereby being of value in overall cost reduction.



APPLICATIONS WHERE UV RESISTANCE IS IMPORTANT

Because of natural resistance to UV degradation, polycarbonate enclosures can weather the passage of time even in harsh exterior applications. Stahlin polycarbonate enclosures carry an f1 rating for outdoor use per UL 746C.

APPLICATIONS WHERE EASE OF MODIFICATIONS IS IMPORTANT

Stahlin polycarbonate enclosures are easy to modify using standard tools for cutting holes, windows, vents, and drains. They cut cleanly without dust and resist delamination. Our ModRight program offers value-add factory design, engineering, and modification to help customers solve demanding product application challenges.



APPLICATIONS USING WIRELESS TECHNOLOGY

Stahlin polycarbonate enclosures are ideal for protecting wireless technology because they allow wireless and radio frequency signals to pass unobstructed through the enclosure. This allows you to have the antennas inside of the enclosure. Additionally, there is the option to block EMI/RFI frequencies if needed, giving you more flexibility than metal enclosures.

Stahlin® PolyStar® Enclosures

Stahlin® PolyStar® Enclosures are designed to be used in a variety of outdoor or indoor applications. They provide superior protection against rain, sleet, snow, splashing water, hose directed water, submersion, sun/uv and flames.



Superior Protection Against:



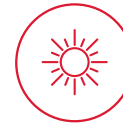
RAIN, SLEET
& SNOW



SPLASHING &
HOSE DIRECTED
WATER



SUBMERSION



SUN/UV



FLAMES


INNOVATIONS & FEATURES:

- One Enclosure, One Solution, One Price! Enclosure can be configured as hinged with screw cover or hinged with latched cover
- Fully nonmetallic hinge, does not penetrate inside enclosure
- Thick, robust side wall construction eliminates side wall flexing
- Built in DIN Rail mounting embosses in the back of the enclosure
- Capability to add side panels, DIN rails or instruments
- Shallow design 18" x 16" x 4" enclosure is ideal for low profile applications and equipment
- Sliding T-Nut allows for infinite panel adjustment back to front
- Latch options – fully non-metallic or stainless steel (see Accessories)
- Clear or Opaque cover options
- Multi-directional mounting feet or flange options allow mounting flexibility
- Aluminum back panel and swing out panel mounting options
- Industry leading size range: 6" x 6" to 24" x 24"
- Compatible with Stahlin SolarShield HMI Cover

MATERIALS & PERFORMANCE:

- Performance: -40°F to +248°F (-40°C to +120°C)
- UL 94 Flame Rating – 5VA (highest flame resistance)
- UL's best rating, Outdoor Exposure, an "f1" per UL 746C (resin has passed tests for UV exposure and water immersion)

RATINGS & LISTINGS:

-  per file #E319779 Type 1, 3R, 4, 4X, 6P*, 12
 - UL50, UL50e, UL508A
 - IEC 60529: UL Listed per file #E362920 IP66, IP68*
 - Certifications: cULus, CE, REACH, and RoHS
- *Restrictions apply. Consult factory for more information.*



PolyStar® Innovative Features



Industrial Control Enclosure

One box, one solution, hinged/latched and screw cover type

Full non-metallic hinge, does not penetrate enclosure

Broad size range: 6" x 6" to 24" x 24"

Clear and opaque cover styles available

Thick, robust sidewall and base construction prevents flexing of walls

Integrated locking clasp

Built-in DIN Rail mounting embosses

Easy to remove door

Full non-metallic or stainless steel cover latches

Robotically-applied foam-in-place gaskets

T-Channel and Slot Nut design allows for infinite adjustment of panels



 UL LISTED
UL Listed as Industrial Control Enclosure

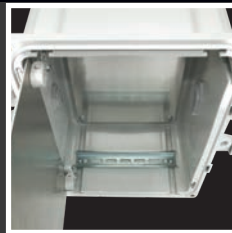
Available Modifications:

- Custom Holes/Cutouts
- Silk Screening/Digital Printing
- Custom Colors



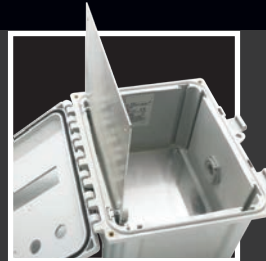
UL 94 Flame Rating – 5VA

- PolyStar® Enclosures provide the highest (most flame retardent) UL 94 rating available.



Flexible Options

- Increases usable space
- Provides more mounting options
 - DIN Rails
 - Back and Side Panel options
 - Mounting embosses in back
 - Optional Weight Distribution Shelf



Panel Systems

- Sub-panel mounting solution
 - Revolutionary design
 - Variable height mounting
 - Panel locks into open position
 - Mounting holes are standard JIC



Mounting Solutions

- Multi-directional mounting feet or NEW Mounting Flange included as means of attachment

SELECT. MODIFY. DELIVER.

SelectRight™ Program

Stahlin's extensive range of standard polycarbonate enclosures, panels, accessories, and other material options gives you the flexibility to select exactly the right non-metallic enclosures to meet the specific demands of your applications.

- Broad selection of standard, configurable, off-the-shelf, corrosion-resistant, non-metallic enclosures to meet your applications.
- Selection of options from available products to meet specification, reduce lead time, and optimize initial costs.
- Product selections ready to use and available now.

ModRight™ Program

Stahlin's ModRight Program is designed to support you in very uncommon or complex applications. From the basic product through all of its custom/modified required changes, to the moment it arrives on your doorstep for installation into your application, Stahlin ModRight offers standard and custom assistance for your every need. To receive a quotation or further information, visit www.stahlin.com/modright.

Modifications can be mixed and matched in an endless number of combinations. They can take the form of:

- Custom cutouts/holes
- Silk screening
- Digital printing
- EMI/RFI shielding
- Custom mold-in colors
- Other special requests

DeliverRight™ Program

DeliverRight provides fast service and delivery of products ready to use when and where you need them. Value-add options are available to improve your productivity including direct shipment, bulk packaging, kitting, and custom labeling.

- Ensures you customer-first service, supply chain, and on-time delivery.
- A trusted partnership approach from consultation and quotation, to packaging and delivery.
- U.S. based manufacturing plus dedicated points of contact help manage orders and delivery.



Enclosures and Panels

POLYSTAR® ENCLOSURE WITH NON-METALLIC LATCHES



BACK PANEL, FLANGE, AND SWING PANEL KIT



ENCLOSURE SIZE	OPAQUE COVER W/ MOUNTING FEET PART #	CLEAR COVER W/ MOUNTING FEET PART #	OPAQUE COVER W/ MOUNTING FLANGE PART #	CLEAR COVER W/ MOUNTING FLANGE PART #	BACK PANEL PART #	SWING KIT PART #
6 x 6 x 4	PC606	PC606CC	PCF606	PCF606CC	BP66**	PC606SPK
8 x 6 x 4	PC806	PC806CC	PCF806	PCF806CC	BP86**	PC806SPK
8 x 8 x 4	PC808	PC808CC	PCF808	PCF808CC	BP88**	PC808SPK
10 x 8 x 4	PC1008	PC1008CC	PCF1008	PCF1008CC	BP108**	PC1008SPK
10 x 8 x 6	PC100806	PC100806CC	PCF100806	PCF100806CC	BP108**	PC1008SPK
10 x 10 x 6	PC1010	PC1010CC	PCF1010	PCF1010CC	BP1010**	PC1010SPK
12 x 10 x 6	PC1210	PC1210CC	PCF1210	PCF1210CC	BP1210**	PC1210SPK
14 x 12 x 6	PC1412	PC1412CC	PCF1412	PCF1412CC	BP1412**	PC1412SPK
16 x 14 x 8	PC1614	PC1614CC	PCF1614	PCF1614CC	BP1614**	PC1614SPK
18 x 16 x 4	PC181604*	PC181604CC*	n/a	n/a	BP1816**	n/a
18 x 16 x 10	PC1816	PC1816CC	PCF1816	PCF1816CC	BP1816**	PC1816SPK
20 x 16 x 8	PC2016	PC2016CC	PCF2016	PCF2016CC	BPJ2016**	PC2016SPK
24 x 24 x 10	n/a	n/a	PC2424*	PC2424CC*	BP2424PC**	PC2424SPK

*Feature mounting feet or flange molded into the box rather than installed separately.

**Add suffix for material desired: AL = aluminum, C = carbon steel, SS = stainless steel

Enclosures and Panels

POLYSTAR® ENCLOSURE WITH STAINLESS STEEL LATCHES



BACK PANEL AND SWING PANEL KIT



ENCLOSURE SIZE	OPAQUE COVER W/MOUNTING FEET PART #	CLEAR COVER W/MOUNTING FEET PART #	BACK PANEL PART #	SWING KIT PART #
6 x 6 x 4	PC606SS	PC606CCSS	BP66*	PC606SPK
8 x 6 x 4	PC806SS	PC806CCSS	BP86*	PC806SPK
8 x 8 x 4	PC808SS	PC808CCSS	BP88*	PC808SPK
10 x 8 x 4	PC1008SS	PC1008CCSS	BP108*	PC1008SPK
10 x 8 x 6	PC100806SS	PC100806CCSS	BP108*	PC1008SPK
10 x 10 x 6	PC1010SS	PC1010CCSS	BP1010*	PC1010SPK
12 x 10 x 6	PC1210SS	PC1210CCSS	BP1210*	PC1210SPK
14 x 12 x 6	PC1412SS	PC1412CCSS	BP1412*	PC1412SPK
16 x 14 x 8	PC1614SS	PC1614CCSS	BP1614*	PC1614SPK
18 x 16 x 4	PC181604SS	PC181604CCSS	BP1816*	n/a
18 x 16 x 10	PC1816SS	PC1816CCSS	BP1816*	PC1816SPK
20 x 16 x 8	PC2016SS	PC2016CCSS	BPJ2016*	PC2016SPK
24 x 24 x 10	PC2424SS	PC2424CCSS	BP2424PC*	PC2424SPK

*Add suffix for material desired: AL = aluminum, C = carbon steel, SS = stainless steel

**Stainless Steel Latch products are available as standard with mounting feet included.

To order with a flange, change the PC prefix to PCF.

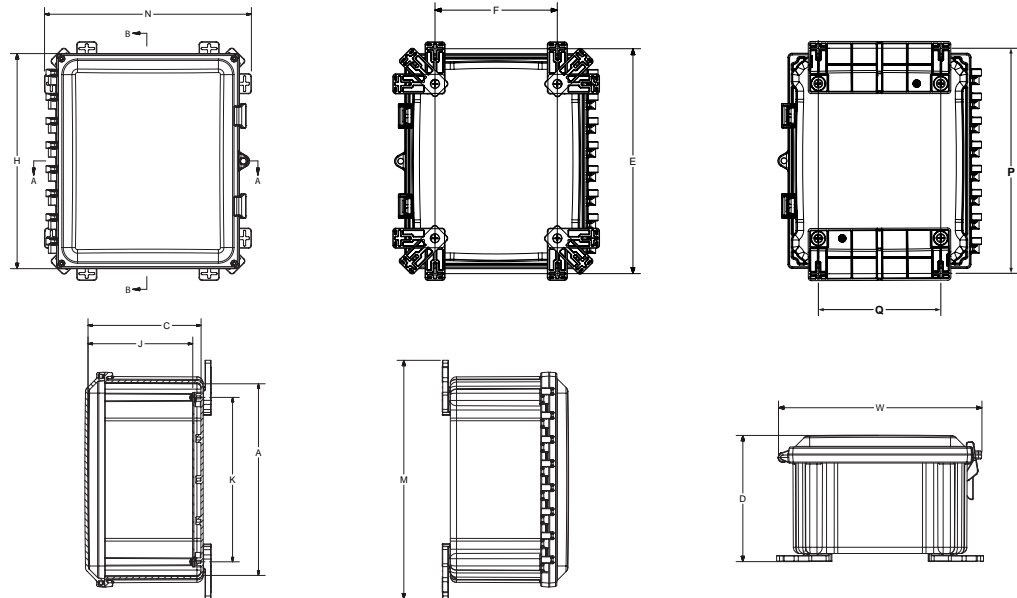
PolyStar® Series Dimensions

SCREW SIZE AND TORQUE TABLE

PRODUCT SIZES	BACK PANEL SCREW SIZE	BACK PANEL RECOMMENDED TORQUE	COVER SCREW SIZE	COVER SCREW RECOMMENDED TORQUE	MOUNTING FOOT SCREW SIZE	MOUNTING FOOT SCREW RECOMMENDED TORQUE	RECOMMENDED MOUNTING FLANGE TORQUE
ALL	#10-32 x 3/8	16-20 in-lbs	#10-32 x 5/8	20-24 in-lbs	1/4-20 x 1/2	10-14 in-lbs	25-30 in-lbs

NOTES:

- Catalog drawing is for reference only
- See actual part drawing for specific design
- Different sizes may have 1, 2, 4, or 6 latches
- J dimension is with back panel installed
- Back panel is sold separately



ENCLOSURE DIMENSIONS TABLE

SIZE ID NUMBER	OVERALL H x W x D	INSIDE A x B x C	MOUNTING FEET HOR. E x F	MOUNTING FEET VER. E x F	MOUNTING FEET 45° E x F	FLANGE P x Q	J	K	L	M	N
PC606 PC606C	7.41 x 8.68 x 5.84 (188 x 223 x 148)	5.94 x 5.94 x 5.02 (151 x 151 x 127)	3.64 x 8.40 (93 x 213)	8.03 x 3.64 (204 x 93)	6.75 x 6.74 (171 x 171)	8.03 x 3.64 (204 x 93)	4.50 (114)	4.25 (108)	4.25 (108)	8.89 (226)	8.89 (226)
PC806 PC806C	9.41 x 8.68 x 5.86 (239 x 223 x 149)	7.97 x 5.97 x 5.07 (202 x 152 x 129)	5.64 x 8.04 (143 x 213)	10.03 x 3.64 (255 x 93)	8.76 x 6.75 (223 x 171)	10.03 x 3.64 (255 x 93)	4.56 (116)	6.25 (159)	4.25 (108)	10.89 (277)	8.89 (226)
PC808 PC808C	9.41 x 10.68 x 5.86 (239 x 271 x 149)	7.97 x 7.97 x 5.03 (202 x 202 x 128)	5.63 x 10.03 (143 x 255)	10.04 x 5.63 (255 x 143)	8.74 x 8.78 (222 x 223)	10.04 x 5.63 (255 x 143)	4.53 (115)	6.25 (159)	6.25 (159)	10.88 (277)	10.88 (277)
PC1008 PC1008C	11.41 x 10.68 x 6.36 (290 x 271 x 161)	9.96 x 7.96 x 5.57 (253 x 202 x 142)	7.64 x 10.04 (194 x 255)	12.03 x 5.64 (306 x 143)	10.76 x 8.75 (273 x 222)	12.03 x 5.64 (306 x 143)	5.05 (128)	8.25 (210)	6.25 (159)	12.89 (327)	10.89 (277)
PC100806 PC100806C	11.41 x 10.68 x 7.89 (209 x 271 x 200)	9.95 x 7.95 x 7.06 (253 x 202 x 179)	7.63 x 10.03 (194 x 255)	12.04 x 5.63 (306 x 143)	10.76 x 8.75 (273 x 222)	12.04 x 5.63 (306 x 143)	6.54 (166)	8.25 (210)	6.25 (159)	12.88 (327)	10.88 (277)
PC1010 PC1010C	11.41 x 12.68 x 6.97 (209 x 322 x 177)	9.95 x 9.95 x 6.15 (253 x 253 x 156)	7.62 x 12.03 (194 x 306)	12.04 x 7.63 (306 x 194)	10.76 x 10.75 (273 x 273)	12.04 x 7.63 (306 x 194)	5.65 (144)	8.25 (210)	8.25 (210)	12.88 (327)	12.88 (327)
PC1210 PC1210C	13.40 x 12.68 x 7.86 (340 x 322 x 200)	11.95 x 9.95 x 7.07 (304 x 253 x 180)	9.64 x 12.04 (245 x 306)	14.03 x 7.64 (357 x 194)	12.76 x 10.75 (324 x 273)	14.03 x 7.64 (357 x 194)	6.56 (167)	10.25 (260)	8.25 (210)	14.89 (378)	12.89 (327)
PC1412 PC1412C	15.40 x 14.68 x 7.86 (391 x 373 x 200)	13.95 x 11.95 x 7.07 (354 x 304 x 180)	11.64 x 14.04 (296 x 357)	16.03 x 9.64 (407 x 245)	14.76 x 12.75 (375 x 324)	16.03 x 9.64 (407 x 245)	6.56 (167)	12.25 (311)	10.25 (260)	16.89 (429)	14.89 (378)
PC1614 PC1614C	17.65 x 16.68 x 9.98 (448 x 424 x 253)	15.93 x 13.93 x 9.20 (405 x 354 x 234)	13.64 x 16.04 (347 x 407)	18.03 x 11.64 (458 x 296)	16.76 x 14.75 (426 x 375)	18.03 x 11.64 (458 x 296)	8.68 (220)	14.25 (362)	12.25 (311)	18.89 (480)	16.89 (429)
PC1816 PC1816C	19.41 x 18.68 x 11.90 (493 x 474 x 302)	17.83 x 15.83 x 11.08 (453 x 402 x 281)	15.64 x 18.04 (397 x 458)	20.03 x 13.64 (509 x 347)	18.75 x 16.74 (476 x 425)	20.03 x 13.64 (509 x 347)	10.56 (268)	16.25 (413)	14.25 (362)	20.89 (531)	18.89 (480)
PC181604* PC181604C*	19.41 x 18.68 x 5.41 (493 x 474 x 137)	18.16 x 16.16 x 5.08 (4.61 x 410 x 129)	n/a	20.50 x 13.50 (521 x 343)	n/a	n/a	4.56 (116)	16.25 (413)	14.25 (362)	21.75 (552)	n/a
PC2016 PC2016C	21.41 x 18.68 x 9.97 (544 x 474 x 253)	19.86 x 15.86 x 9.15 (504 x 403 x 232)	18.75 x 19.17 (476 x 487)	22.05 x 14.75 (560 x 375)	21.91 x 17.87 (557 x 454)	22.05 x 14.75 (560 x 375)	8.65 (220)	18.25 (464)	14.25 (362)	24.00 (610)	20.02 (509)
PC2424* PC2424C*	25.41 x 26.68 x 11.41 (645 x 678 x 290)	23.91 x 23.91 x 11.88 (607 x 607 x 302)	n/a	n/a	n/a	25.69 x 18.00 (653 x 457)	10.56 (268)	22.25 (565)	22.25 (565)	26.69 (678)	21.86 (555)

All measurements are in inches; items in parentheses are in millimeters.

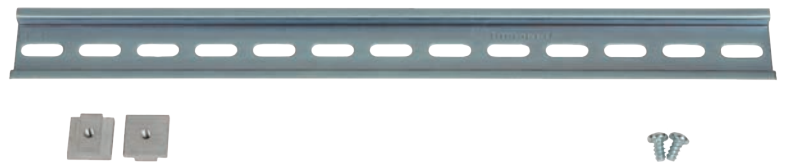
*Feature mounting feet or flange molded into the box rather than installed separately.

DIN Rail Kits

DRK DIN Rail Kits

CATALOG #	FITS
PC6DRK	6"
PC8DRK	8"
PC10DRK	10"
PC12DRK	12"
PC14DRK	14"
PC16DRK	16"
PC18DRK	18"
PC20DRK	20"
PC24DRK	24"

Kit includes DIN rail that fits size indicated, plus two custom slot nuts and two screws for mounting to enclosure.



14" DRK DIN RAIL KIT

DR DIN Rail Kits

CATALOG #	FITS
PC6DR	6"
PC8DR	8"
PC10DR	10"
PC12DR	12"
PC14DR	14"
PC16DR	16"
PC18DR	18"
PC20DR	20"
PC24DR	24"

Kit includes a DIN rail that fits size indicated, plus two trilobular screws for mounting to back of enclosure.



14" DR DIN RAIL KIT

PolyStar® Series Interior Mounting Solutions

Weight Distribution Shelves

- APPLICATIONS:**
- This innovative weight distribution shelf provides an extremely rugged support system when adding heavy equipment in polycarbonate enclosures.
 - Ideal for support when adding a power supply, battery, or heavy equipment.

- BENEFITS:**
- Improves installation quality by reducing potential for bottom wall deflection
 - Reduces risk of enclosure and equipment maintenance and replacement costs due to damage from added weight

- INNOVATIVE FEATURES:**
- Aluminum shelf supported by enclosure side walls reduces risk of deflection of the enclosure bottom wall when subjected to increased weight load
 - Available in 7 SKUs designed for use with our polycarbonate enclosure sizes from 10" x 10" to 24" x 24"
 - Constructed from strong, lightweight, corrosion resistant aluminum
 - Available as standalone SKUs or included with our polycarbonate enclosures*
 - Fastening hardware included

**When ordered included with the enclosure, shelves are shipped unassembled and included in the enclosure carton.*

Individual Weight Distribution Shelves for Polycarbonate Enclosures

CATALOG #	SHELF WIDTH	SHELF DEPTH	FITS ENCLOSURE TYPE
WD105	10"	5"	PC1010
WD106	10"	6"	PC1210
WD12	12"	6"	PC1412
WD14	14"	8"	PC1614
WD1610	16"	10"	PC1816
WD168	16"	8"	PC2016
WD24	24"	10"	PC2424

**Fastening hardware included*



Polycarbonate Enclosure with Weight Distribution Shelf Included in Carton

CATALOG #	POLYCARBONATE ENCLOSURE DIMENSIONS	SHELF INCLUDED
PCWD1010	10" x 10" x 6"	WD105
PCWD1210	12" x 10" x 6"	WD106
PCWD1412	14" x 12" x 6"	WD12
PCWD1614	16" x 14" x 8"	WD14
PCWD1816	18" x 16" x 10"	WD1610
PCWD2016	20" x 16" x 8"	WD168
PCWD2424	24" x 24" x 10"	WD24

**Add CC to end of Catalog # for polycarbonate enclosure with clear cover*



PolyStar® Series Interior Mounting Solutions

Side Panel Kits

APPLICATIONS: → Aluminum side panels allow for mounting of components on enclosure walls, increase mounting space and flexibility, and reduce the need to increase the enclosure size to accommodate additional components—enabling customers to use smaller enclosures in applications requiring tight spacing.

BENEFITS:

- Increases customer installation flexibility—equipment can be mounted on multiple sides of the enclosure, in addition to the traditional enclosure back wall
- Lowers cost by reducing the need to increase the enclosure size when more mounting space is required
- Reduces engineering labor (maintains enclosure mounting footprint)

INNOVATIVE FEATURES:

- Available in 9 SKUs designed for use with our polycarbonate enclosure sizes 6" x 6" to 24" x 24"
- Corrosion resistant slot nut fastening hardware kit included
- Simple and easy installation with the use of common tools—simply install, position, and secure the side panel using the provided slot nuts which fit perfectly in the innovative enclosure T-Slots.

Individual Side Panel Kits for Polycarbonate Enclosures

CATALOG #	SIDE PANEL SIZE	FITS (ENCLOSURE LONG SIDE)	FITS (ENCLOSURE SHORT SIDE)
SP6	6"	PC606	PC806
SP8	8"	PC808	PC808, PC1008
SP10	10"	PC100806, PC1010	PC1010
SP12	12"	PC1210	PC1412
SP14	14"	PC1412	PC1614
SP16	16"	PC1614	PC1816, PC2016
SP18	18"	PC1816	n/a
SP20	20"	PC2016	n/a
SP24	24"	PC2424	n/a

*Mounting slot nut hardware included in kit



PolyStar® Series Accessories

SLOT NUT KIT



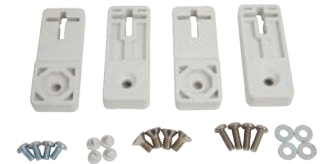
SWING PANEL MOUNTS



POLYCARBONATE REPLACEMENT LATCH KIT



ACCESSORY KIT



STAINLESS STEEL REPLACEMENT LATCH KIT



POLYCARBONATE VENT



MOUNTING FLANGE KIT



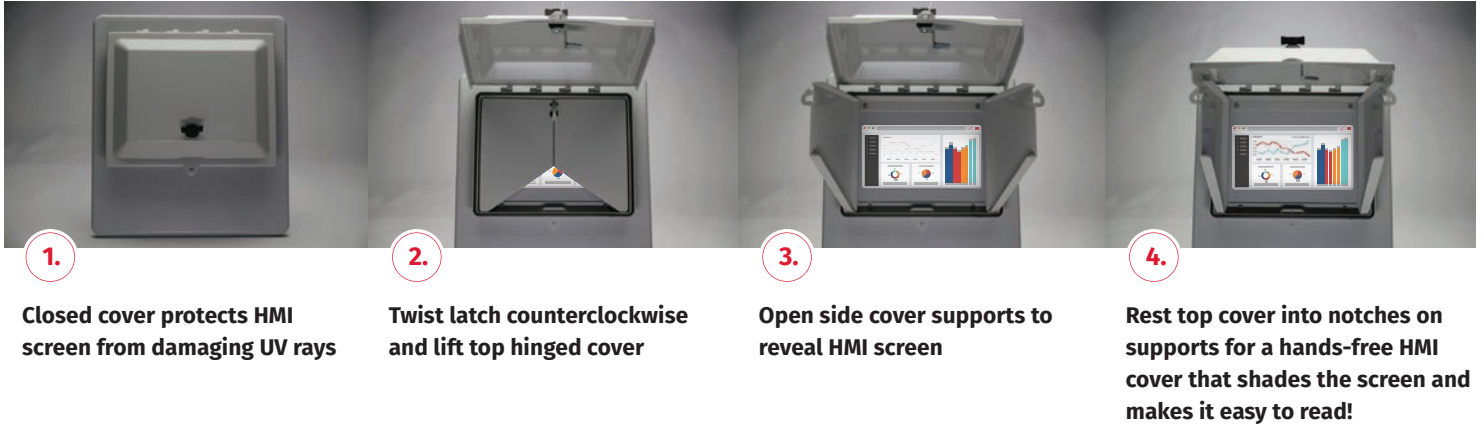
PLUGGIT!



CATALOG #	DESCRIPTION	PIECES INCLUDED
PCSNK	Slot Nut Kit	Two nuts & two screws
PCSPMK	Swing Panel Mounts	Four per kit
PCLATCHKIT	Polycarbonate Replacement Latch Kit	Two non-metallic latches per kit
PCACCESSORYKIT	Accessory Kit – replacement only	Four mounting feet, cover screws, mounting caps, back panels screws, & washers
PCLATCHKITSS	Stainless Steel Replacement Latch Kit	Two stainless steel latches per kit
REV60	Small Vent (60mm) UL Listed 3R	Mounting nut
REV80	Small Vent (80mm)	Mounting nut
MFK6 MFK8 MFK10 MFK12 MFK14 MFK16	Mounting Flange Kit for Polycarbonate Enclosures (6"-16")	Two polycarbonate mounting flanges, four countersunk screws
REHPERIES1	Pluggit! Kit – Fits Cutouts for 1/2", 5/8", 3/4" Dia. Hole	Hole plug, gaskets, spacer sleeve
REHPERIES1.5	Pluggit! Kit – Fits Cutouts for 1/2" Conduit	Hole plug, gaskets, spacer sleeve
REHPERIES2	Pluggit! Kit – Fits Cutouts for 1/2" Conduit, 22mm Push Button, 3/4" Conduit, 30mm Push Button	Hole plug, gaskets, spacer sleeve
REHPERIES3	Pluggit! Kit – Fits Cutouts for 1", 1 1/4" Conduit	Hole plug, gaskets, spacer sleeve
REHPERIES4	Pluggit! Kit – Fits Cutouts for 1 1/2", 2" Conduit	Hole plug, gaskets, spacer sleeve
REHPERIES5	Pluggit! Kit – Fits Cutouts for 2 1/2" Conduit	Hole plug, gaskets, spacer sleeve
REHPERIES6	Pluggit! Kit – Fits Cutouts for 3" Conduit	Hole plug, gaskets, spacer sleeve
REHPERIES7	Pluggit! Kit – Fits Cutouts for 3 1/2" Conduit	Hole plug, gaskets, spacer sleeve
REHPERIES8	Pluggit! Kit – Fits Cutouts for 4" Conduit	Hole plug, gaskets, spacer sleeve

SolarShield™ HMI Cover

How It Works:



APPLICATIONS:

- Extremely tough and durable, SolarShield HMI Covers are used in both outdoor and indoor applications. They provide superior protection of Human Machine Interface (HMI) screens from the sun, wind-blown dust, water, oils, chemicals, grease, and other environmental conditions.

BENEFITS:

- **Simple and Functional:** Easy to use, hinged design includes supporting inner doors for hands-free use and better visibility of the HMI screen in the sun.
- **Superior Protection:** SolarShield HMI covers protect HMI screens and electrical equipment from corrosion and damage due to UV, water, oils, dirt, and sand and greatly reduce equipment replacement cost.
- **Strength:** Impact resistant polycarbonate construction provides long dependable life in harsh conditions.

INNOVATIVE FEATURES:

- Patent pending with non-metallic, hinged inner doors to shield screen from the sun and allow for hands-free use
- Maintains NEMA Type 4/4X enclosure rating when paired with a NEMA Type 4/4X HMI device
- Universal covers can be used with either non-metallic or metallic enclosures
- Fits most standard 10" x 8" and smaller HMI screens
- Lightweight, high-impact rated, UV resistant polycarbonate material construction
- Stainless steel hardware kit included
- Padlock-able for increased security
- Simple and easy installation with the use of common tools
- Installation instructions and drill template provided
- Color: Pantone 428C

OPEN UP YOUR EYES.

CATALOG #	OVERALL H x W x D	INSIDE H x W x D (SCREEN CLEARANCE)
HMICVR1008	13.13 x 11.41 x 2.50	9.88 x 7.25 x 0.40



Other Polycarbonate Enclosures



Operator Interface Enclosure

PushButton Series

UL Listed File #E362920, IP66 IP68

UL Listed File #E64358 Type 1, 3R, 4X, 6P, 12

CATALOG #	HOLES	HOLE SIZE	OVERALL H x W x D
CFPC1PB	1	1.20 (30)	4.34 x 3.16 x 2.79 (110 x 80 x 71)
CFPC2PB	2	1.20 (30)	5.12 x 3.16 x 3.54 (130 x 80 x 90)
CFPC1PB22	1	0.89 (22)	4.34 x 3.16 x 2.79 (110 x 80 x 71)
CFPC2PB22	2	0.89 (22)	5.12 x 3.16 x 3.54 (130 x 80 x 90)



Safety Yellow PushButton Series

UL Listed File #E362920, IP66, IP68

UL Listed File #E64358 Type 1, 3R, 4X, 6P, 12

CATALOG #	HOLES	HOLE SIZE	OVERALL H x W x D
YW-CFPC1PB	1	1.20 (30)	4.34 x 3.16 x 2.79 (110 x 80 x 71)
YW-CFPC2PB	2	1.20 (30)	5.12 x 3.16 x 3.54 (130 x 80 x 90)
YW-CFPC1PB22	1	0.89 (22)	4.34 x 3.16 x 2.79 (110 x 80 x 71)
YW-CFPC2PB22	2	0.89 (22)	5.12 x 3.16 x 3.54 (130 x 80 x 90)



Ideal for emergency stop applications!



Junction Style Enclosure

CF Series Polycarbonate

UL File E362920, IP66, IP68

UL Listed File #E64358 Type 1, 3R, 4X, 6P, 12

CATALOG #	HOLES	OVERALL H x W x D	INSIDE A x B x C
CFPC432	Blank	4.34 x 3.16 x 2.79 (110 x 80 x 71)	3.92 x 2.74 x 2.51 (100 x 70 x 64)
CFPC533	Blank	5.12 x 3.16 x 3.54 (130 x 80 x 90)	7.71 x 2.74 x 3.26 (130 x 80 x 90)



All measurements are in inches; items in parentheses are in millimeters.



500 Maple Street
Belding, MI 48809

o: 616.794.0700
e: CSR@robroyenclosures.com

stahlin.com

MADE IN THE USA

©2023 Stahlin® | ALL RIGHTS RESERVED.

V7-06/01/2023